

Secoroc Rock Drilling Tools

PDC & Klaw Bits



Atlas Copco NewTech

Sustainable Productivity



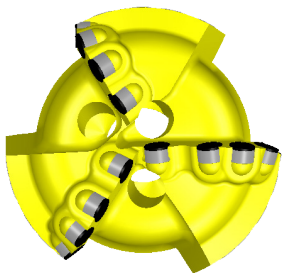
PDC Dirt Digger Bits™

Dirt Digger Bits™ are cost effective PDC drill bits ideally suited for mining, construction, fiber optic, water well, geothermal and shallow oil & gas drilling. PDC bit advantages over a traditional roller cone bit include longer bit life, smoother drilling operations and increased penetration rates.

D313

- Tapered parabolic profile design offers maximum ROP when drilling homogeneous and consolidated formations.

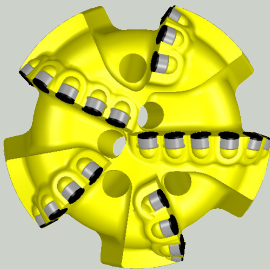
Available Sizes
3-7/8"
4-1/4"
4-1/2"
4-3/4"
4-7/8"
5-1/8"
5-5/8"
5-7/8"



D513

- Tapered parabolic profile design offers an optimal combination of cutter protection and ROP capabilities for a variety of formations and drilling conditions.

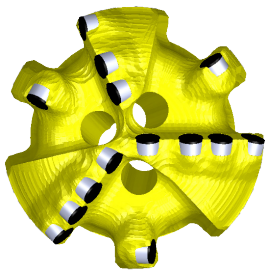
Available Sizes
3-3/4"
3-7/8"
4-1/4"
4-1/2"
4-3/4"
4-7/8"
5-1/8"
5-5/8"
5-7/8"



D613

- Flat parabolic profile design offers maximum protection when drilling non-homogeneous and unconsolidated formations.

Available Sizes
5-5/8"
5-7/8"
6"
6-1/8"
6-1/4"
6-1/2"
6-3/4"
7-7/8"
8-1/2"
8-3/4"
9-7/8"
10-5/8"
11"
12-1/4"



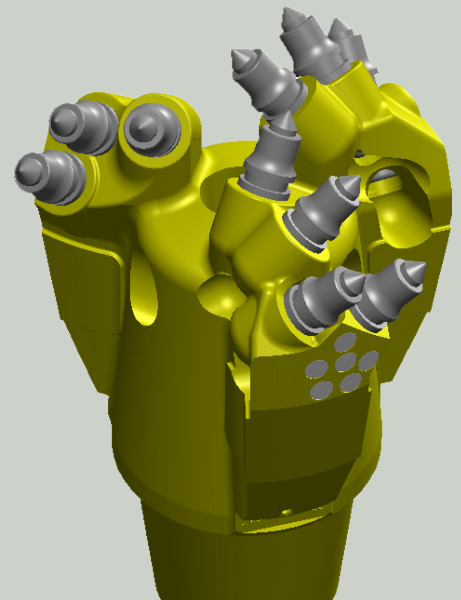
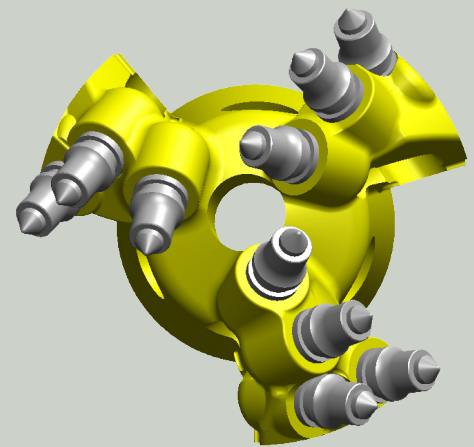
9" K3KL (Patent No. 12/714,481)

Design Features

- One-piece 4140 alloy steel bit body ensures maximum blade and body strength.
- Open center design for maximum air flow to all cutters on bit.
- 3D designed cutter locations and bit features are CNC machined to meet exact design specifications and ensure product repeatability.
- TCI inserts on gage pads to protect outer cutter pockets.
- Receptacle in shank for air flow reduction washer.

General Data

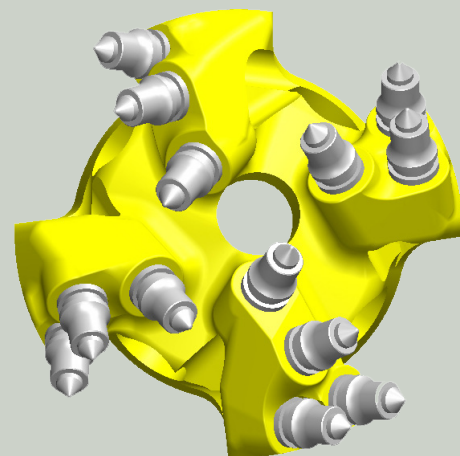
- Part Number: 91002583
- Body Type: One-piece 4140 Steel Alloy
- Make-Up Length: 9.39 in.
- Overall Length: 13.27 in.
- Pin Connection: 4-1/2" API Regular
- Insert Cutters: 10 @ K Type



9-7/8" K4KL (Patent No. 12/714,481)

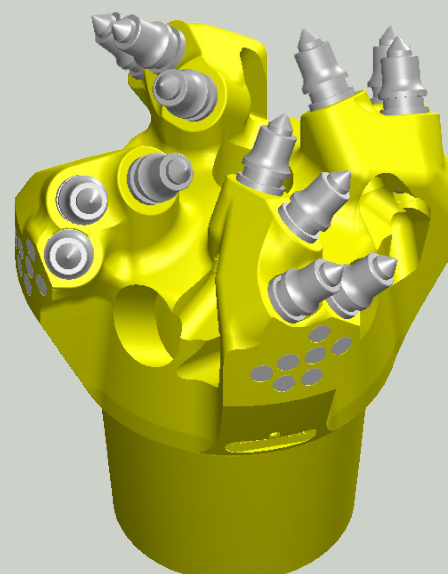
Design Features

- One-piece 4140 alloy steel bit body ensures maximum blade and body strength.
- Open center design for maximum air flow to all cutters on bit.
- 3D designed cutter locations and bit features are CNC machined to meet exact design specifications and ensure product repeatability.
- TCI inserts on gage pads to protect outer cutter pockets.
- Receptacle in shank for air flow reduction washer.



General Data

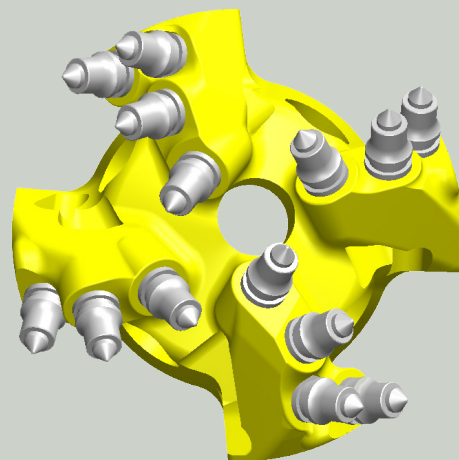
Part Number:	9753213647
Body Type:	One-piece 4140 Steel Alloy
Make-Up Length:	7.17 in.
Overall Length:	12.10 in.
Pin Connection:	6-5/8" API Regular
Insert Cutters:	13 @ K Type



10-5/8" K4KL (Patent No. 12/714,481)

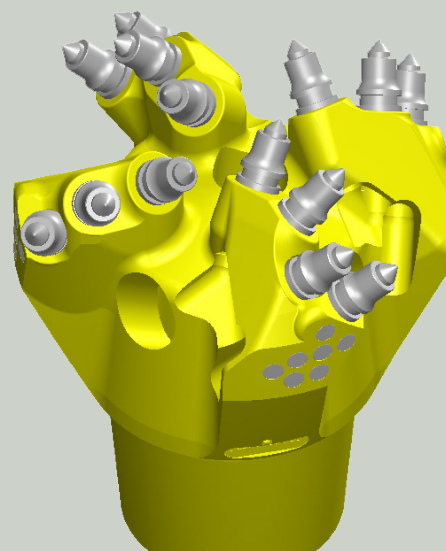
Design Features

- One-piece 4140 alloy steel bit body ensures maximum blade and body strength.
- Open center design for maximum air flow to all cutters on bit.
- 3D designed cutter locations and bit features are CNC machined to meet exact design specifications and ensure product repeatability.
- TCI inserts on gage pads to protect outer cutter pockets.
- Receptacle in shank for air flow reduction washer.



General Data

Part Number:	91002682
Body Type:	One-piece 4140 Steel Alloy
Make-Up Length:	13.00 in.
Overall Length:	17.95 in.
Pin Connection:	6-5/8" API Regular
Insert Cutters:	14 @ K Type



11" K4KL (Patent No. 12/714,481)

Design Features

One-piece 4140 alloy steel bit body ensures maximum blade and body strength.

Open center design for maximum air flow to all cutters on bit.

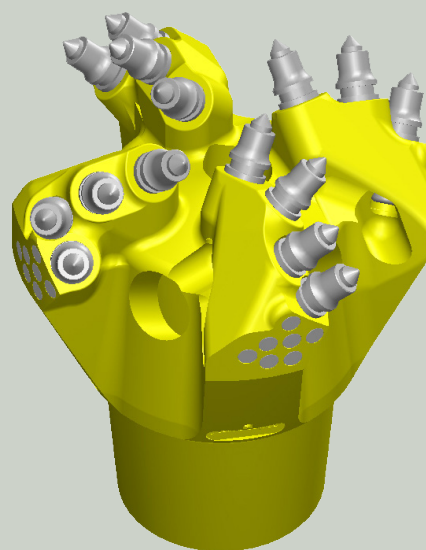
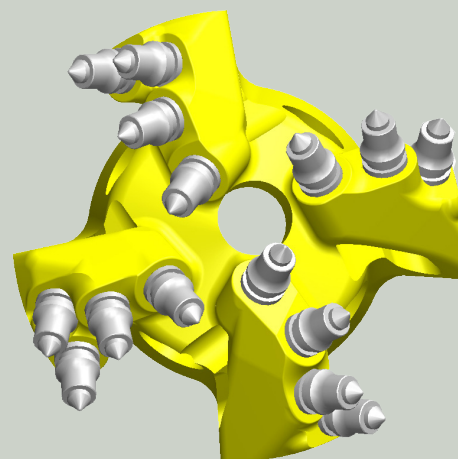
3D designed cutter locations and bit features are CNC machined to meet exact design specifications and ensure product repeatability.

TCI inserts on gage pads to protect outer cutter pockets.

Receptacle in shank for air flow reduction washer.

General Data

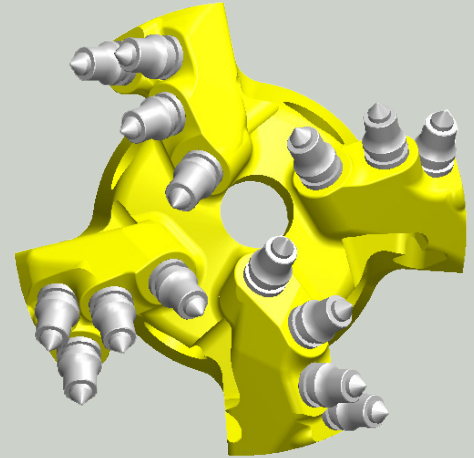
Part Number:	9753213555
Body Type:	One-piece 4140 Steel Alloy
Make-Up Length:	8.43 in.
Overall Length:	13.37 in.
Pin Connection:	6-5/8" API Regular
Insert Cutters:	15 @ K Type



11-1/4" K4KL (Patent No. 12/714,481)

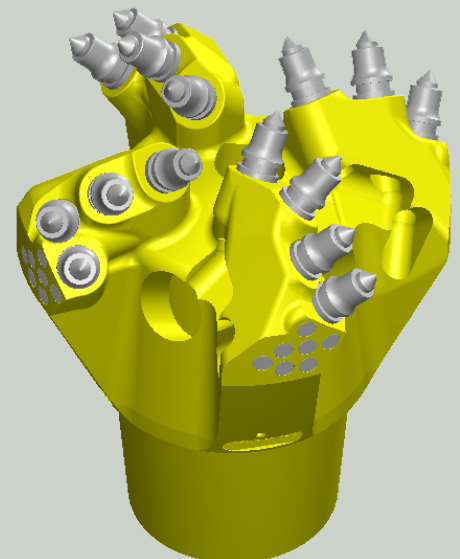
Design Features

- One-piece 4140 alloy steel bit body ensures maximum blade and body strength.
- Open center design for maximum air flow to all cutters on bit.
- 3D designed cutter locations and bit features are CNC machined to meet exact design specifications and ensure product repeatability.
- TCI inserts on gage pads to protect outer cutter pockets.
- Receptacle in shank for air flow reduction washer.



General Data

Part Number:	9753213605
Body Type:	One-piece 4140 Steel Alloy
Make-Up Length:	8.71 in.
Overall Length:	13.64 in.
Pin Connection:	6-5/8" API Regular
Insert Cutters:	15 @ K Type



12-1/4" K4KL (Patent No. 12/714,481)

Design Features

One-piece 4140 alloy steel bit body ensures maximum blade and body strength.

Open center design for maximum air flow to all cutters on bit.

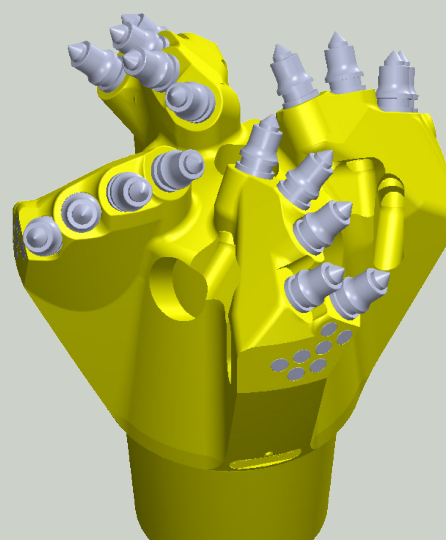
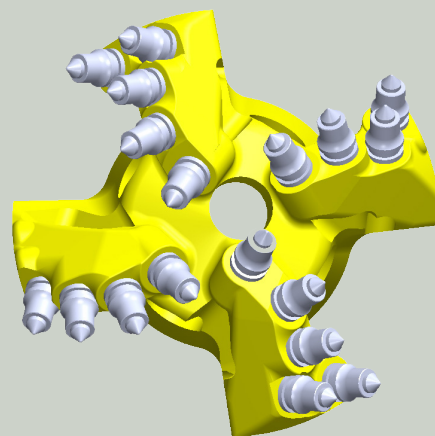
3D designed cutter locations and bit features are CNC machined to meet exact design specifications and ensure product repeatability.

TCI inserts on gage pads to protect outer cutter pockets.

Receptacle in shank for air flow reduction washer.

General Data

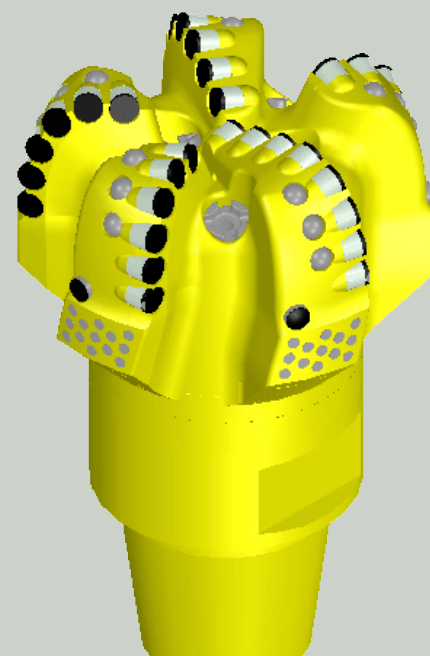
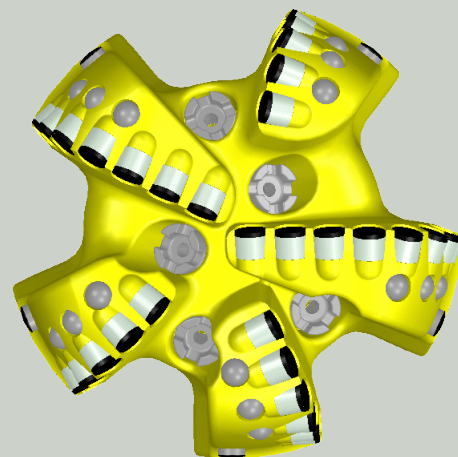
Part Number:	9753213545
Body Type:	One-piece 4140 Steel Alloy
Make-Up Length:	10.33 in.
Overall Length:	15.27 in.
Pin Connection:	6-5/8" API Regular
Insert Cutters:	18 @ K Type



Matrix Body PDC Drill Bits

Design Features

- Cast Infiltrated Tungsten Carbide matrix shell for maximum erosion and abrasion resistance.
- 3D designed and CNC machined internal steel blank for maximum blade and body strength.
- TSP Diamond enhanced gage pads for maximum protection.
- Optimized parabolic profile for blade count, cutter quantity and bit stability.
- Force-Balanced PDC cutter locations minimize bit whirl and drill a precise round hole.
- Asymmetric blade design reduces drilling harmonics.
- Available in sizes 5-7/8" to 17-1/2", 4 to 8 blades.



5 Bladed Designs			
Size	Style	Cutter Size	Nozzles
7-7/8"	M513	13mm	5 or 7 LOP
7-7/8"	M516	16mm	5 or 7 LOP
8-1/2"	M513	13mm	5 or 7 LOP
8-1/2"	M516	16mm	5 or 7 LOP
8-3/4"	M513	13mm	5 or 7 LOP
8-3/4"	M516	16mm	5 or 7 LOP

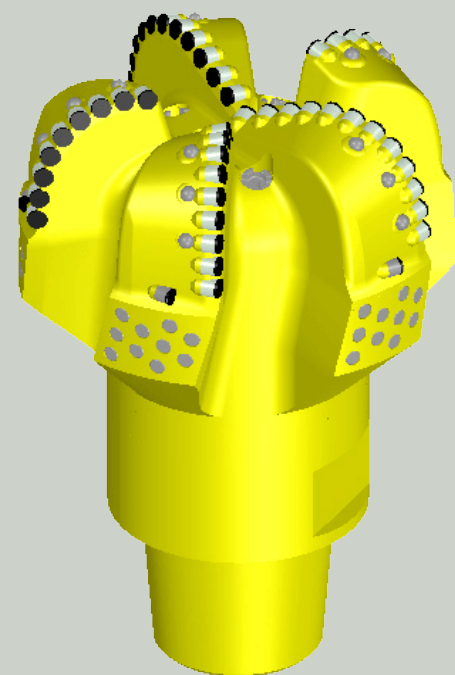
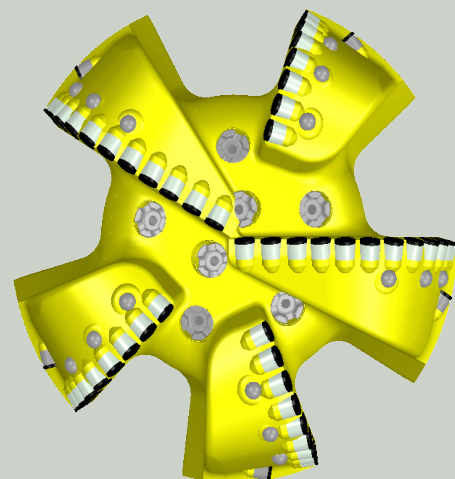
Bladed Designs			
Size	Style	Cutter Size	Nozzles
7-7/8"	M513	13mm	6 LOP
7-7/8"	M516	16mm	6 LOP
8-1/2"	M513	13mm	6 LOP
8-1/2"	M516	16mm	6 LOP
8-3/4"	M513	13mm	6 LOP
8-3/4"	M516	16mm	6 LOP

Other bit sizes & styles available upon request. See your Atlas Copco NewTech Customer Service Representative for specific product Data Sheets.

Steel Body PDC Drill Bits

Design Features

- 3D designed 4140 alloy steel body CNC machined for maximum blade and body strength.
- Tungsten Carbide hardfacing in critical areas for increased erosion and abrasion resistance.
- TCI enhanced gage pads for increased protection.
- Optimized parabolic profile for blade count, cutter quantity and bit stability.
- Force-Balanced PDC cutter locations minimize bit whirl and drill a precise round hole.
- Asymmetric blade design reduces drilling harmonics.
- Available in sizes 7-7/8" to 17-1/2", 4 to 8 blades.



5 Bladed Designs			
Size	Style	Cutter Size	Nozzles
7-7/8"	S513U	13mm	5 or 7 LOP
7-7/8"	S516U	16mm	5 or 7 LOP
8-1/2"	S513U	13mm	5 or 7 LOP
8-1/2"	S516U	16mm	5 or 7 LOP
8-3/4"	S513U	13mm	5 or 7 LOP
8-3/4"	S516U	16mm	5 or 7 LOP

Bladed Designs			
Size	Style	Cutter Size	Nozzles
7-7/8"	S513U	13mm	6 LOP
7-7/8"	S516U	16mm	6 LOP
8-1/2"	S513U	13mm	6 LOP
8-1/2"	S516U	16mm	6 LOP
8-3/4"	S513U	13mm	6 LOP
8-3/4"	S516U	16mm	6 LOP

Other bit sizes & styles available upon request. See your Atlas Copco NewTech Customer Service Representative for specific product Data Sheets.



Atlas Copco NewTech
6146 South 350 West, Salt Lake City, UT 84107 USA
Phone: +801 281 1682
E-mail: secoroc@se.atlascopco.com
www.atlascopco.com